

Meet the teacher

24/25

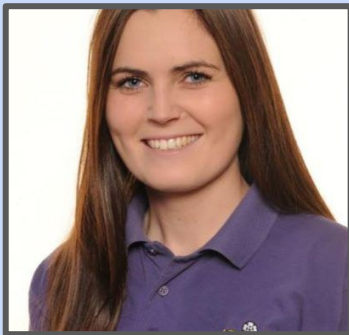


Meet the staff who will be working with your children this year!

Mrs Slack: Pastoral



Mrs Jenkins: Computing



Mrs Gould: EYFS/Y1 AT



Miss Kilvington: EYFS Teacher



Mrs Poole: EYFS AT



Mrs Williamson: KS1 Lead



8:40-doors Handwriting	8:50- 9:00	9:05 – 9:20	9:20-9:40	9:20-10:30 (snack 10:30)	10:45- 11:05	11:-05- 11:40	11:40- 12:00	12:00- 13:00	1:00-1:20	1:20-2:00	2:00-2:25	2:25- 2:30	2:45 – 3/3:20
Monday (Handwriting)	Handwriting	EYFS KEY TEXT	Provision		Phonics	Provision	NO CP	Lunch	Maths	Provision and focus groups	Music	Maths Master y	CW
Tuesday (Handwriting)	Handwriting	EYFS KEY TEXT	Provision & PE		Phonics	Provision	NO CP	Lunch	Maths	Provision and focus groups	Interventions	Maths Master y	Class CW
Wednesday (Handwriting)	Reading practice	FOREST SCHOOL			Phonics	Provision	NO CP	Lunch	Maths Big Write	Provision and focus groups	Interventions	Maths Master y	CW
Thursday (Handwriting)	Reading practice	PPA BOOK CHANGE						Lunch	Phonics	NO CP- CG guided reading groups	Interventions	Maths Master y	PSHE
Friday (Handwriting)	Reading practice	EYFS KEY TEXT	Provision & big write		Phonics	Provision	NO CP	Lunch	Maths	Provision Guided reading groups	PSHE	Star of the week 2:30	



- Little Wandle scheme- https://www.youtube.com/channel/UCP_FbJYUP_UtldV2K_-nlVw/videos
- Reading 3 times week/5 mins per night
- Books changed each Thursday & raffle tickets given out. Prize draw at end of each half term
- Support packs might be sent home
- Use a wide range of books, including bookshelves, library books etc
- Each week there will be focus spelling words these are matched to the little wandle phonics scheme. This is not a formal assessment but is there to support your child with their writing.

We use NCETM as a whole school approach.

We also use white rose to inform our planning- following small steps.

FB

There are daily and weekly catch up sessions to support children with their learning.

	1	2	3	4	5	6	7	8	9	10	11	12	13
C1	Unit 1 Previous Reception experiences and counting within 100			Unit 2 Comparison of quantities and part-whole relationships			Unit 3 Numbers 0 to 5		Unit 4 Recognise, compose, decompose and manipulate 2D and 3D shapes			Unit 5 Numbers 0 to 10	
FF		Mastering Number weeks 1-5						Mastering Number weeks 6-10					
C2	Unit 5 Numbers 0 to 10	Unit 6 Additive structures				Unit 7 Addition and subtraction facts within 10			Unit 8 Numbers 0 to 20			Unit 10 Position and direction	
FF		Mastering Number weeks 11 - 15						Mastering Number weeks 16 - 20					
C3	Unit 9 Unitising and coin recognition					Unit 11 Time		*Year 2 Unit 1* Numbers 10 to 100		*Unit 12* Fractions		*Unit 13* Measure	
FF	Mastering Number weeks 21 - 25						Mastering Number weeks 26 - 31						

Tockwith behaviour expectations

Our behaviour policy is consistent from EYFS up to Y6 so expectation always remains.

- reminder 1: verbal reminder
- reminder 2: 2 minutes away from group
- reminder 3: whole session away from group
- reminder 4: time spent in another class
- reminder 5: visit to Mr Reeve
- We also have a house point system and chances to earn class rewards as positive incentives for good behaviour.

Our School Community Contract

SCHOOL COMMUNITY CONTRACT

Our aims are:

To inspire everyone to reach their individual potential and, through our Christian values, prepare them for the future.

School will:

1. Provide a safe, caring and welcoming environment in which our pupils can flourish.
2. Provide a motivating and challenging education that will bring out the best in our pupils.
3. Provide an inclusive environment which allows all to live life in all its fullness.
3. Respect and value our pupils' individuality.
4. Encourage our pupils to respect themselves, others, and the environment.
5. Be open, honest, and constructive about all aspects of our pupils' school life.
6. Value the attendance of all.

Family will:

1. Play an active and supportive role in our child's learning.
2. Respect and value the school and its community.
3. Encourage the family to get involved and participate in our child's school life.
4. Be open, honest and constructive about anything that may affect our child's education.
5. Support our inclusive environment which allows all to live life in all its fullness.
6. Value the importance of children attending school.

Useful apps

- Seesaw
- Numbots & TT Rockstars
- 1 minute White Rose maths
- E collins books
- Spelling shed

Login details for these apps will be sent out in the near future and will go into their reading records.

We're all looking forward to working in partnership with you in supporting your child. Please...

Share any important information with us



Support your child with short bursts of reading daily

Check your child has everything for the day

FB

HK

Add any comments to Seesaw posting- the children love this